

VIDEW®

Villa Video Intercom

Contact: Hayden Nie
Email: sales24@szsjd.com

珠海市深九鼎光电科技有限公司

Zhuhai Shenjiuding Optronics Technologies Co., Ltd.

一言九鼎 一诺千金 Keep Promise As Weight As Gold



Company Profile

Zhuhai Shenjiuding Optronics Technologies Co., Ltd. was established in 2013, formerly name Shenzhen Xinjiuding Optronics Technologies Co., Ltd., which was established in 1998. Our company built our own 30000 m² Tech Park in 2013, Zhuhai city. And we moved the whole factory to Zhuhai from Shenzhen, started to used new company name “Zhuhai Shenjiuding Optronics Technologies Co., Ltd.” in same time.

As a manufacturing enterprise, the factory covers a total area of about 4,000 square meters, with 4 SMT production lines, 5 assembly lines and 2 testing lines. There are 103 employees, including 12 senior R & D engineers and 8 professional QC engineers. Our company strictly comply with the ISO9001 quality management system for production, and obtained the national high technology enterprise qualification in 2016.

As an old company, we work with most customers in security industry, such as ABB, Alba Urmet, Hikvision, Legrand, JFL, Lider, Intelbras, WRT, YUS, Schindler, Anjubao ...

We will always be committed to providing you the best service with high quality products.



Factory Building



Reception



RD team



Meet Room



Warehouse



SMT workshop



Laboratory



Workshop



Workshop



Workshop



Sample room

Product Catalogue

TCP/IP digital Video Intercom system-RJ45 wiring



Any door station can be combined with any indoor monitor

Product Catalogue

TCP/IP digital Video Intercom system / 2-wire (RVV2) wiring



Any door station can be combined with any indoor monitor

Product Catalogue

Analog Video Intercom system / 4-wire (RVV4) wiring



Any door station can be combined with any indoor monitor



Product	JDBD11V06E Silver metal door station	
Camera	Sensor	1/3" CMOS digital camrea
	Pixel	1MP
	Resolution	720P 30fps
	Lens	2.9mm Lens, 940nm IR Leds
	FOV	D-FOV 120 Degree
Features	HD Camera, IC card, Tuya APP, Metal housing, IP66 waterproof, Support POE, Private mold, LOGO customized.	
Dimension	16.7x9.4cm	
Wiring type	RJ45,2-wire (RVV2)	
Installation	Wall Mounting	
Quotation	RJ45	58USD
	RVV2	63USD



Product	JDV6-VDMK Black Metal Villa Door Station	
Camera	Sensor	1/3" CMOS Digital Camera
	Pixel	1MP
	Resolution	720P 30fps
	Lens	3.6MM Lens,650nm Leds
	FOV	D-FOV 100 Degree
Features	HD Camera, IC card, Tuya APP, Metal housing, IP66 waterproof, Support POE, Private mold, LOGO customized.	
Dimension	15.5x8.5cm	
Wiring type	RJ45,2-wire (RVV2)	
Installation	Wall Mounting / Embedded Installation	
Quotation	RJ45	48USD
	RVV2	53USD



Product	JDV6-VDMA White Plastic Villa Door Station	
Camera	Sensor	1/3" CMOS Digital Camera
	Pixel	1MP
	Resolution	720P 30fps
	Lens	3.6MM Lens,650nm Leds
	FOV	D-FOV 100 Degree
Features	HD Camera, IC card, Tuya APP, Mini plastic housing, IP66 waterproof, Support POE, LOGO customized.	
Dimension	11.5x11.5cm	
Wiring type	RJ45	
Installation	Wall Mounting	
Quotation	50USD	



Product	4-Wire Door Station	
Camera	Sensor	1/4" CMOS Analog Camera
	Pixel	0.3MP
	Resolution	700TVL
	Lens	3.7mm pinhole Lens,940nm leds
	FOV	D-FOV 100 Degree
Features	RVV4 wiring, metal shell, IC card, max support 2 VDP + 1 indoor monitor.	
Dimension	14.5x4.5cm	
Wiring type	4-wire (RVV4)	
Installation	Wall Mounting	
Quotation	20USD	



Product	4-Wire Door Station	
Camera	Sensor	1/4" CMOS Analog Camera
	Pixel	0.3MP
	Resolution	700TVL
	Lens	2.4mmLens ,940nm IR Leds
	FOV	D-FOV 120 Degree
Features	RVV4 wiring, metal shell, IC card, max support 2 VDP + 1 indoor monitor.	
Dimension	12.5x14.3cm	
Wiring type	4-wire (RVV4)	
Installation	Wall Mounting	
Quotation	18USD	



Product	JDV6-R70M04 7" Digital Indoor Monitor	
LCD features	7" LCD, 1024x600	
Control Way	Capacitive Touch Screen	
Features	Tuya APP, CTP, Metal shell, glass cover, black/white cover optional, support POE, support IPC, LOGO customized.	
Dimension	18.3x12.4cm	
Wiring type	RJ45,2-wire (RVV2)	
Quotation	RJ45 Ver.	58USD
	2-wire Ver.	Coming Soon

Private
mold



Product	JDLD70V06M 7" Digital Indoor Monitor	
LCD features	7" LCD, 1024x600	
Control Way	Capacitive Touch Screen	
Features	Tuya APP, CTP, plastic shell, glass cover, support POE, support IPC, LOGO customized.	
Dimension	19.5x12cm	
Wiring type	RJ45,2-wire (RVV2)	
Quotation	RJ45	45USD
	2-wire	53USD



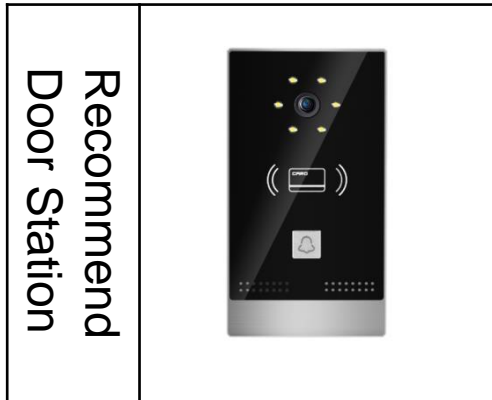


Product	JDV6-R70M03-T/C 7" Digital Indoor Monitor	
LCD features	7" LCD, 1024x600	
Control Way	Capacitive Touch Screen	
Features	Tuya APP, CTP, metal shell, glass cover, support POE, support IPC, LOGO customized.	
Dimension	21.7x13.8cm	
Wiring type	RJ45,2-wire (RVV2)	
Quotation	RJ45 Ver.	58USD
	2-wire Ver.	63USD

Recommend Door Station	
---------------------------	--



Product	JDV6-R10P03 10.1" Digital Indoor Monitor	
LCD features	10.1" LCD, 1024x600	
Control Way	Capacitive Touch Screen, Shortcut keys	
Features	10.1" LCD, Tuya APP, CTP, metal shell, support POE, support IPC, LOGO customized.	
Dimension	26.5x17.6cm	
Wiring type	RJ45	
Quotation	RJ45 Ver.	87USD





Product	JDV6-R70P03 7" Digital Indoor Monitor	
LCD features	7" LCD, 1024x600	
Control Way	Capacitive Touch Screen, Shortcut keys	
Features	Tuya APP, CTP, plastic shell, glass cover, support POE, support IPC, LOGO customized.	
Dimension	21.4x12.9cm	
Wiring type	RJ45	
Quotation	RJ45 Ver.	43USD





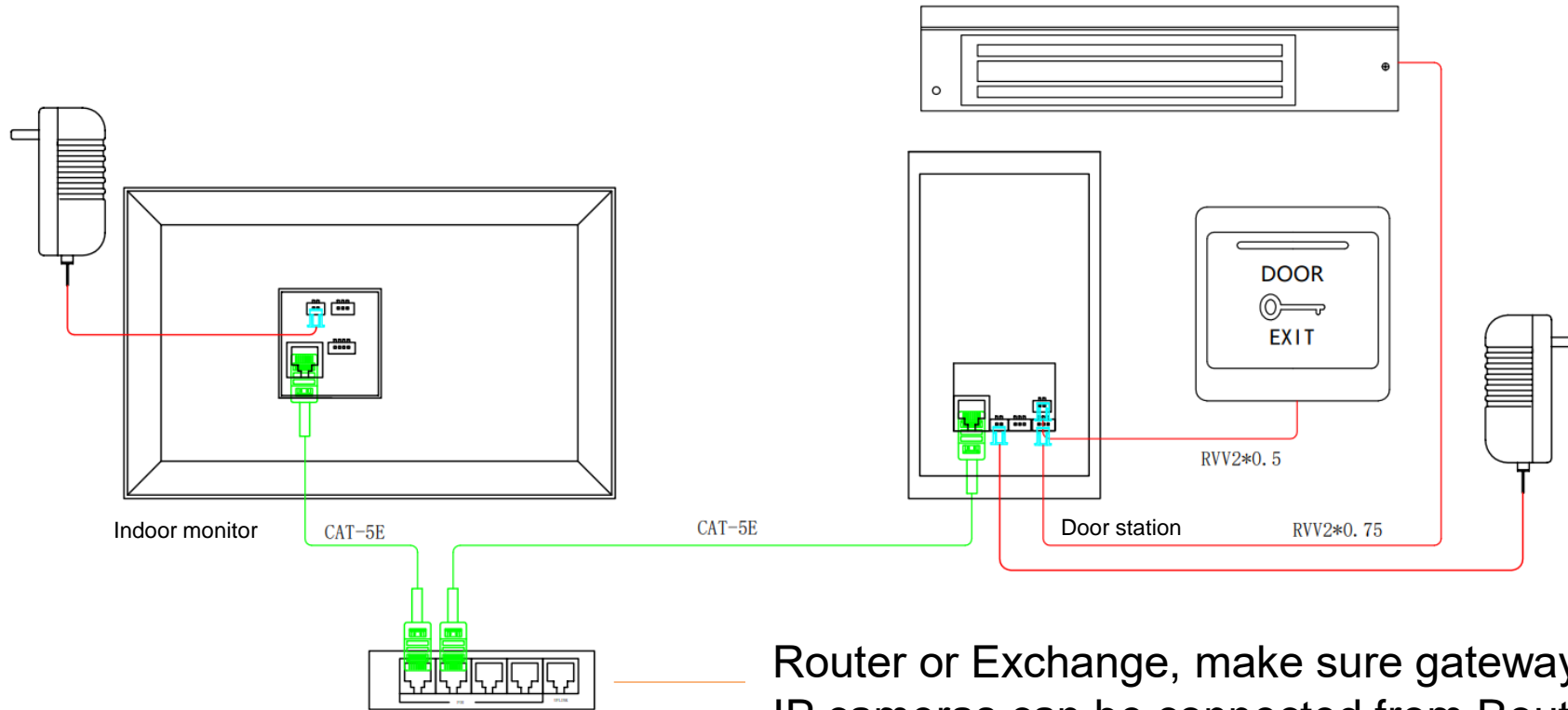
Product	JDLC70A602A 7" 4-wire Indoor Monitor	
LCD features	7" LCD, 1024x600	
Control Way	Keypad Control	
Features	RVV4 wiring, metal shell, IC card, OSD menu adjust color, brightness, ring tone, volume, max support 2 VDP + 1 indoor monitor, LOGO customized.	
Dimension	19.5x12cm	
Wiring type	4-wire (RVV4)	
Quotation	4-wire Ver.	43USD





Product	JDLC43A602A 4.3" 4-wire Indoor Monitor	
LCD features	4.3" LCD, 480x272	
Control Way	Keypad Control	
Features	RVV4 wiring, metal shell, IC card, OSD menu adjust color, brightness, ring tone, volume, max support 2 VDP + 1 indoor monitor, LOGO customized.	
Dimension	18x11.5cm	
Wiring type	4-wire (RVV4)	
Quotation	4-wire Ver.	31USD

Wiring Diagram for RJ45 version

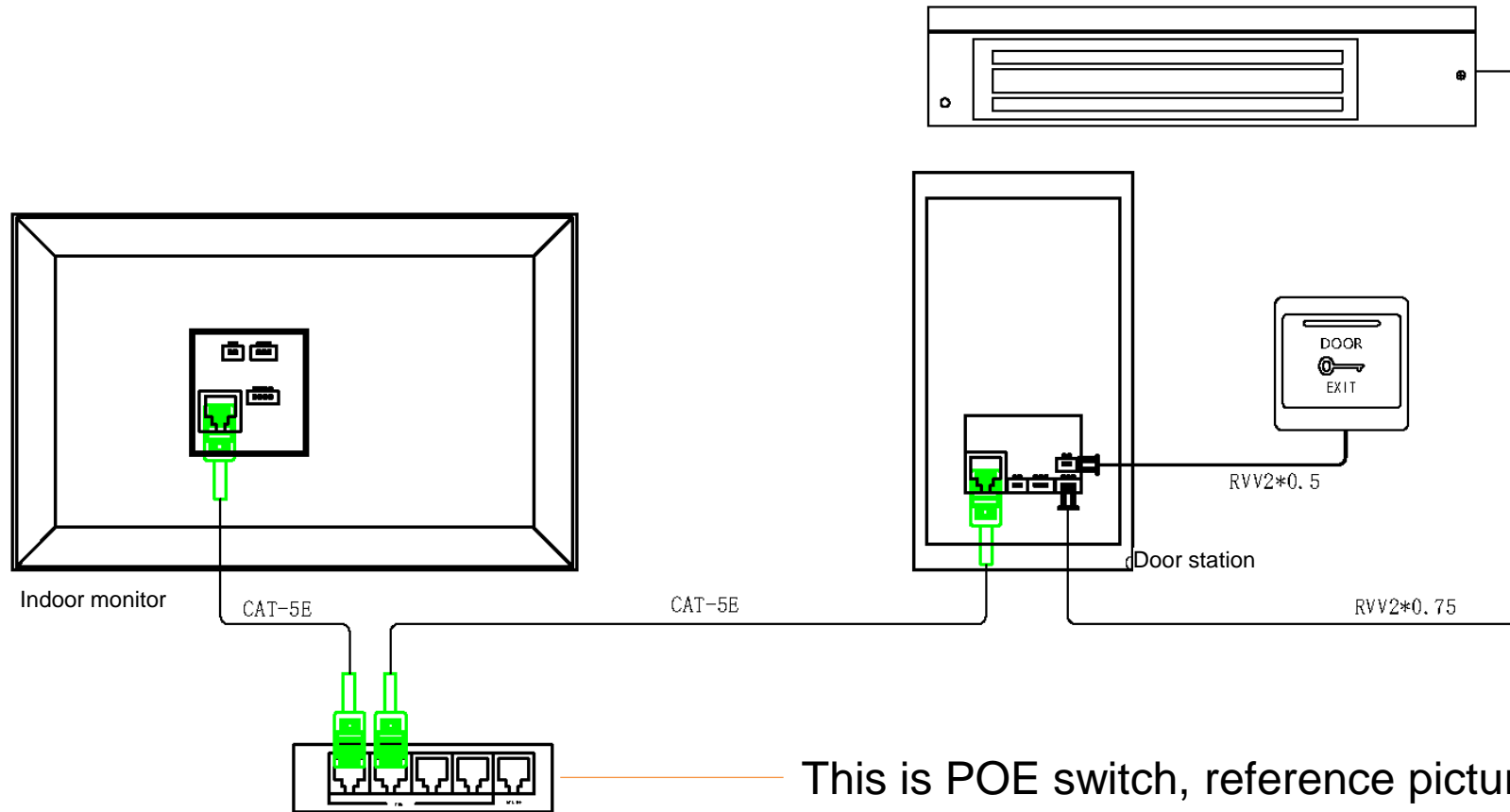


18V 1~2A power supply * 2,
 Optional EU/US standard.

Connect Electric control lock
 Or Electromagnetic lock.
 Cat5/cat5e/cat6 available.

Router or Exchange, make sure gateway IP address is "192.168.1.1"
 IP cameras can be connected from Router or exchange.

Wiring Diagram for RJ45 (POE version)



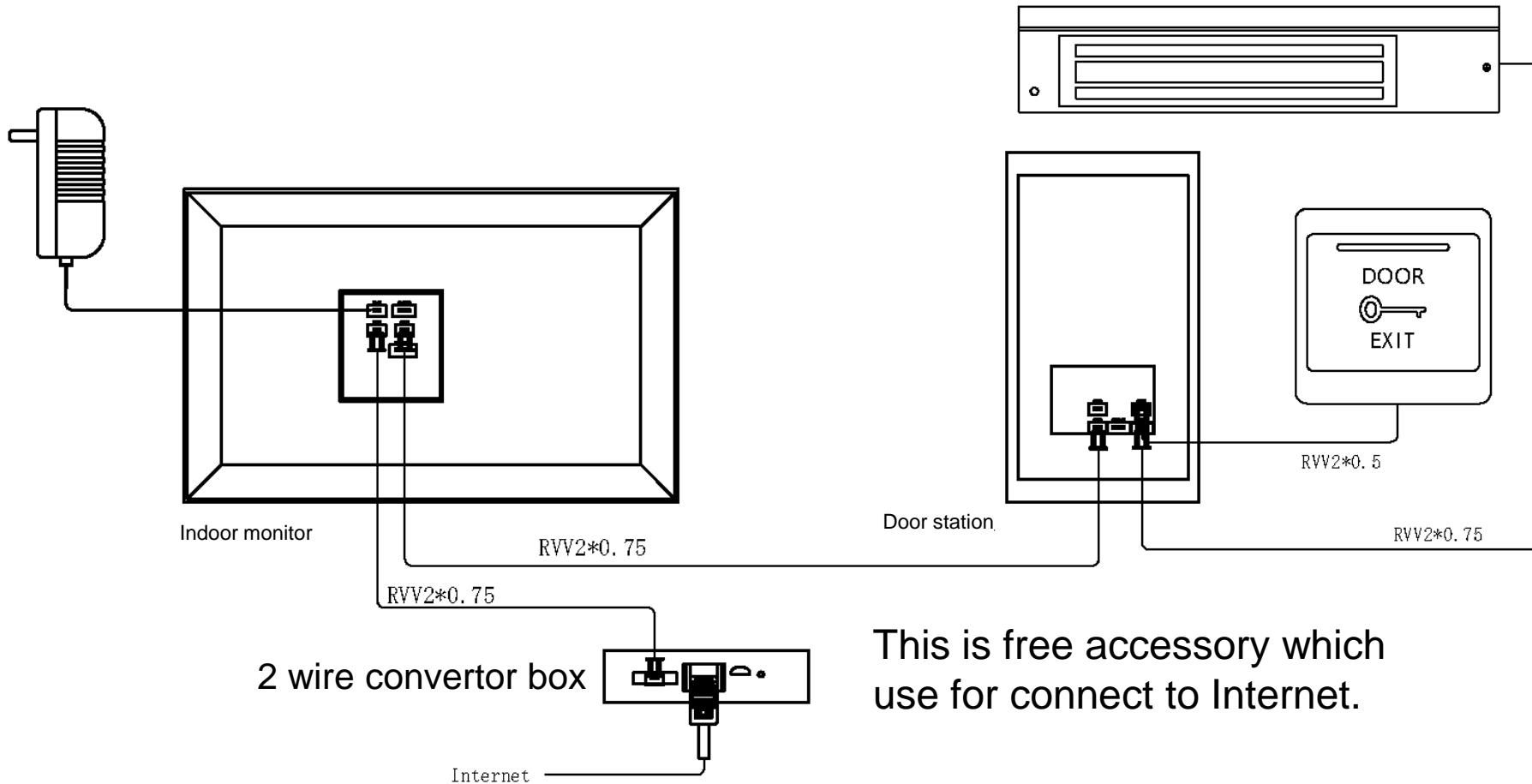
+35USD
got POE switch

6 POE ports + 2 normal ports
Metal Case, optional EU/US.



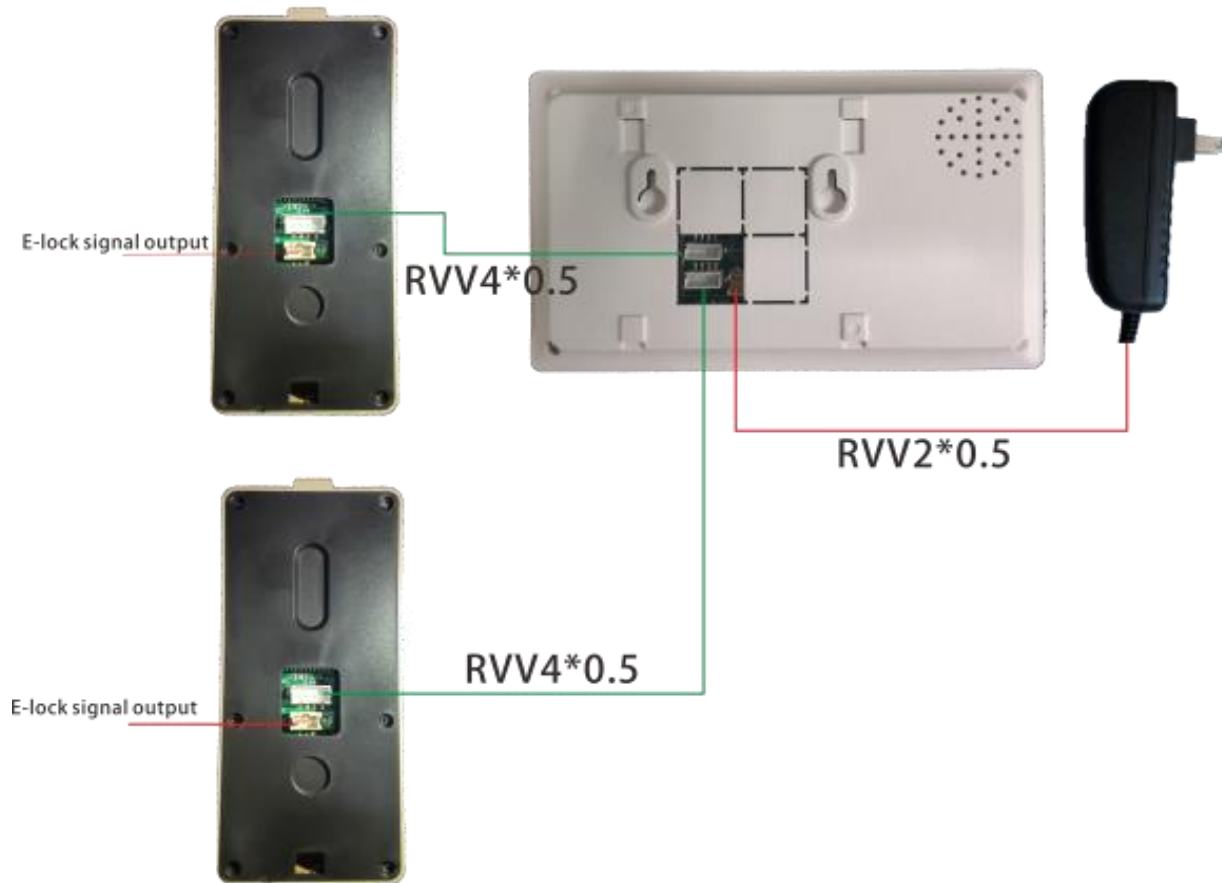
This is POE switch, reference picture :

Wiring Diagram for 2-Wire version



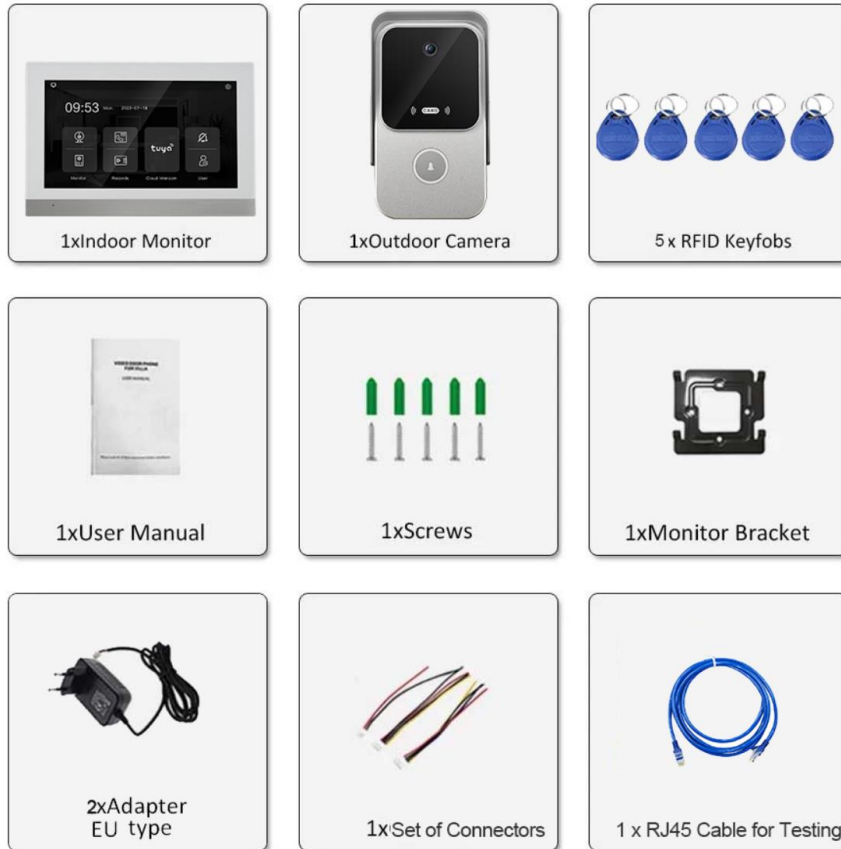
This is free accessory which use for connect to Internet.

Wiring Diagram for 4-Wire version



Max support 2 door stations
 1 indoor monitor available
 1 power supply

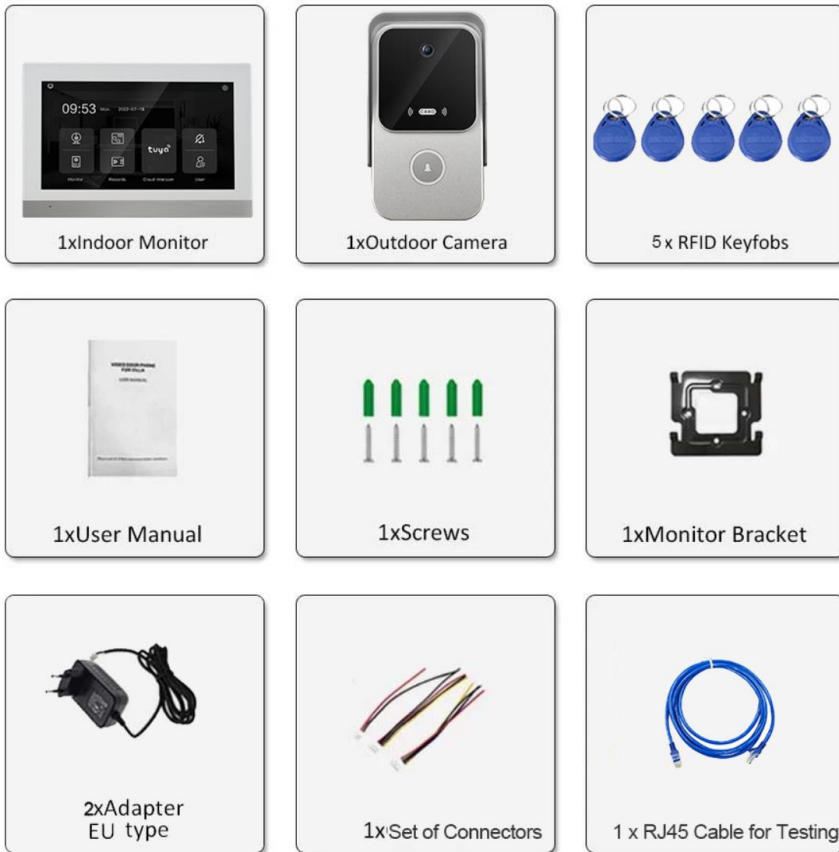
Free Accessories included for RJ45 wiring version:



- Door station x1
- Indoor monitor x1
- 2wire convertor box x1
- Monitor brackets x1
- IC cards x5
- 1m RJ45 cable x1
- Power adaptor x1
- Accessory wires x3
- User Manual x1
- Screws x1 set

Optional POE accessories for RJ45 wiring version:

+35USD



Free Accessories included for 2-wire(RVV2) version:



- Door station x1
- Indoor monitor x1
- 2wire convertor box x1
- Monitor brackets x1
- IC cards x3
- 1m RVV2*0.75 cables x2
- Power adaptor x1
- Accessory wires x2

Free Accessories included for 4-wire(RVV4) version:



- Door station x1
- Indoor monitor x1
- Monitor brackets x1
- IC cards x3
- 1m RVV4*0.75 cables x1
- Power adaptor x1
- Accessory wires x1

THANKS!

《《 一言九鼎 一诺千金 》》